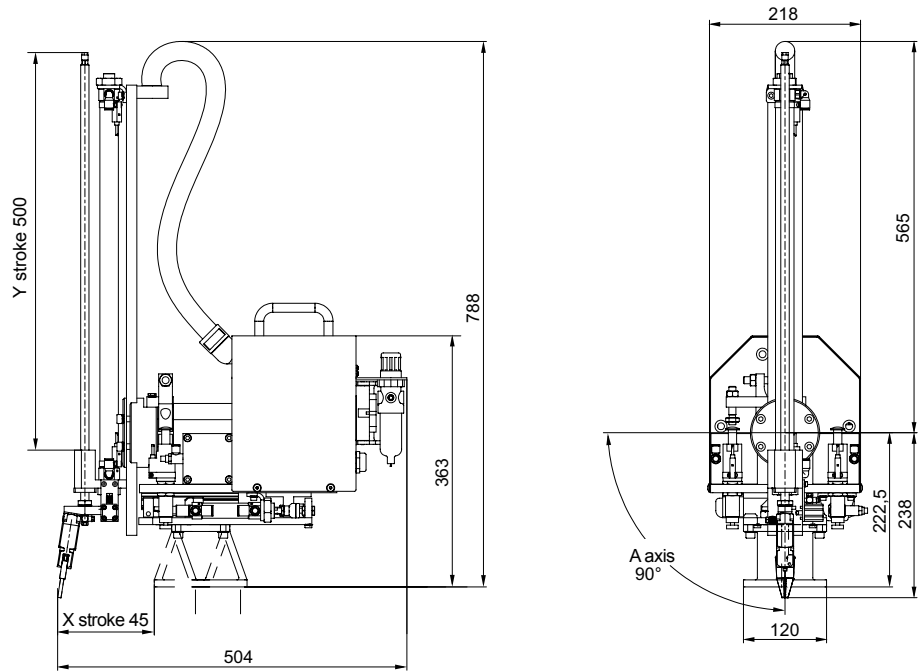




# SPRUE PICKERS

MINI *Picco* 0.3

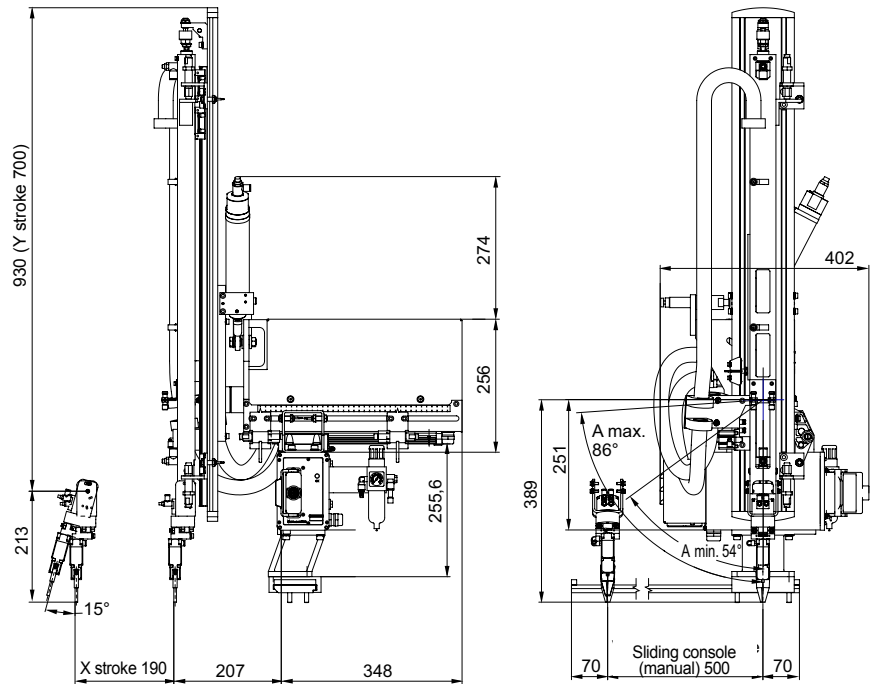
- Freely programmable control HT320 V5
- With Easytouch
- Sprue gripper
- Rapid drive system on Y axis



Axes X/Y/Z	pneumatic
Repeatability	± 0,6 mm
Part and gripper weight completely	0,3 kg
For injection moulding machines up to	1000 kN
Connected load	110/230 V (60/50)
Compressed air connection	6 bar
Compressed air consumption	4,0 NI/Cycle (without vacuum)
Interface	Euromap 67

MINI 2001 *SLI*

- Freely programmable control HT320 V5
- With Easytouch
- Sprue gripper
- Rapid drive system on Y axis
- Rotating module B axis
- Vacuum cycle
- Compressed air cycle for gripper F



Axes X/Y/Z	pneumatic
Repeatability	± 0,2 mm
Part and gripper weight completely	2,0 kg
For injection moulding machines up to	3000 kN
Connected load	110/230 V (60/50)
Compressed air connection	6 bar
Compressed air consumption	9,0 NI/Cycle (without vacuum)
Interface	Euromap 67





# THE GEIGER WARRANTY

**2-year-warranty on all MiniPicco and Mini2000 SLI.**

As the link between the machine and the workpiece, handling devices have an enormous influence on process accuracy and efficiency. Their stability and precision are the basis for reliability and utilization rate of the injection molding machine and machine tools.

The sprue pickers convince through **reliability and highest quality**.

✓ Low holding time    ✓ High precision    ✓ 2-year-warranty

## CONTACT

**GEIGER Handling GmbH & Co. KG**  
Steffensrott 7  
D-52428 Jülich

### CONTACT US!

We will be happy to provide you with comprehensive advice regarding your business requirements. Your message will be sent to our GEIGER experts.



#### E-MAIL

info@geigerhandling.de



#### SERVICE-HOTLINE

**+49 (0) 7455 94 700**  
(fixed network: 0,20 €/call;  
mobile: 0,60 €/call)

Subject to change. The shown machines can contain options, accessories and control variants.