

# The **Baby** Series

The granulator for small sprues and lab applications

The Baby Series is perfectly suited for small sprues and granulating tasks in the lab.

There are two basic models available within the series: A standard model with suction box for production and a lab model with a granulate drawer to collect ground stock.

Various hoppers and stands also make it easy to further adapt the granulator to specific tasks.

Its compact design with a gear motor takes up minimal space. This makes the baby granulator outstanding for installation in small injection moulding machines and sorting systems.

The Baby Series is the perfect solution for micro injection moulding with small throughputs of up to about 3 kg/h.

Model B 08.10 Standard





## Advantages



- > Optimised cutting geometry yields high-quality ground stock
- > Low rotor rotation speed and solid construction make it very quiet
- > Compact design takes up minimal space
- > Extremely easy to open and clean – ideal for applications requiring frequent material changes and for lab applications
- > Low energy usage means low operation costs

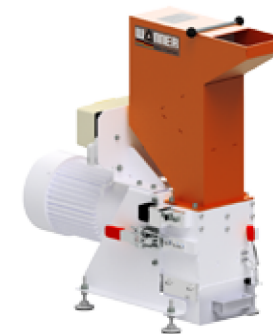
## Technical Data



### B 08.10

Cutting chamber opening	80 x 100 mm <sup>2</sup>
Rotor diameter	90 mm
Rotor knives	9
Stator knives	2
Motor power	0,75 kW
Weight	40 kg

(All dimensions in mm, rounded, subject to technical modifications)

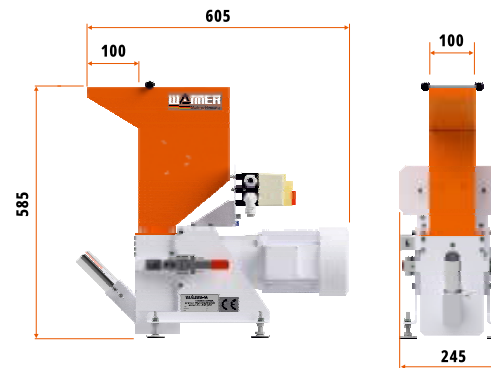


### < B 08.10 Lab design

For applications in the lab, we offer the baby granulator with a closed drawer where the ground stock produced is collected. The drawer can be easily taken out without opening the cutting chamber.

For cleaning purposes, the top part of the cutting chamber together with its hopper can be easily removed, thus exposing the rotor and cutting chamber completely.

## Dimensions



B 08.10 Granulator completely open ▲



### < B 08.10 On high stand

Our baby granulator is also available in various designs, e.g. with a feed hopper for robot feeding (no illustration), on a high stand (see image) or with various special feed hoppers. This makes it easy to adapt our smallest granulator to your needs. The Baby Series is the perfect granulator to handle small sprues and small throughputs.