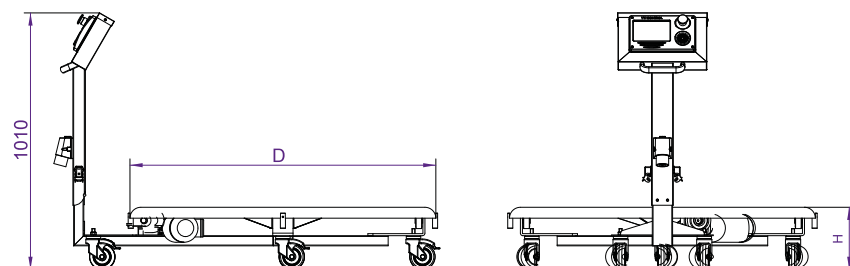
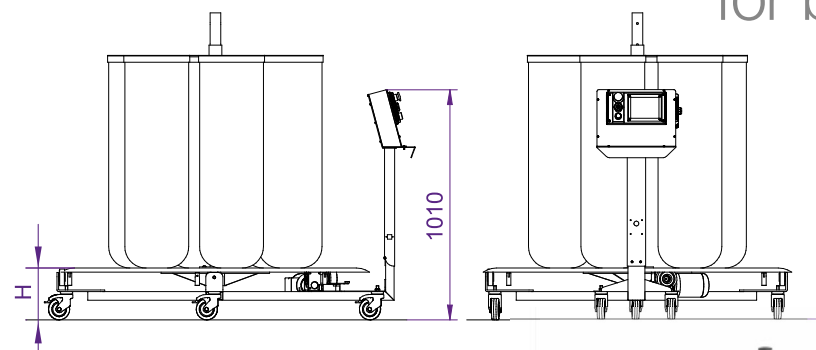


o-round storage system

for boxes



for bags



CHARACTERISTICS

- O-ROUND: a basic turntable to fill boxes/cartons or bags
- Disc structure made of stainless steel AISI 430 thickness 4 mm
- Possible to install some supporting brackets for boxes/cartons or a bag-holder frame supported by a central rod
- Turntable complete with control panel TV having the following functioning logic:
 - An external voltage-free normally open NO clean contact linked to the production cycle of the IMM is memorized by the relative pulse counter. Every enabling signal on the input corresponds to a moulding phase and every moulding phase corresponds to a certain quantity of product. The number of enabling signals required to fill the container is selected on the control panel. Once the selected number of enabling signals has arrived, the pulse counter stops the loading conveyor, starts counting the enabling signals from zero again, turns the table to the next loading station and starts the loading conveyor once more. Any stamping phases that may have occurred as the machine switched from one loading station to the next will be memorized by the pulse counter. The control panel is complete of a signal that can be used to stop the loading conveyor during the turntable's rotation during the turntable's rotation



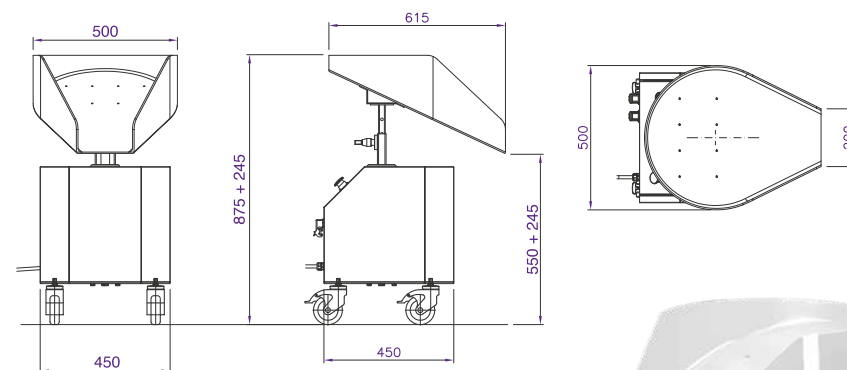
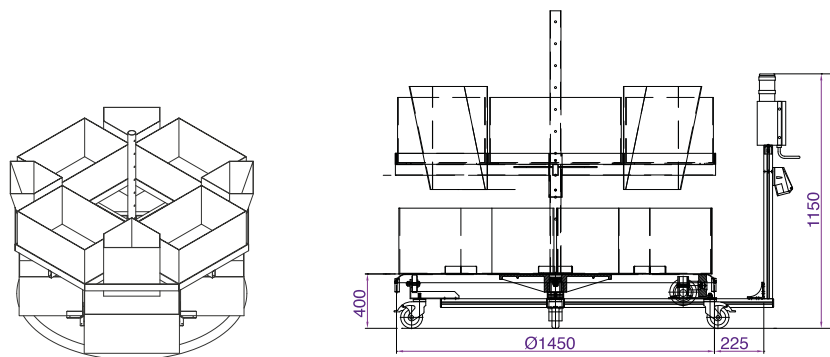
TECHNICAL FEATURES

- Possible diameter Ø 1200 mm or Ø 1450 mm
- Height of the disc from the floor = ~250 mm
- Capacity of the turntable 120 kg - 140 kg
- Speed of the turntable 1,7 - 2,2 tours per minute
- Standard motor supply voltage 400V/50 Hz

O-ROUND DIMENSIONS

DIMENSION	D (mm)	H (mm)	CAPACITY	ROTATION SPEED
O-ROUND.a	1200	250	120 kg	2,2 rpm
O-ROUND.b	1450	250	140 kg	1,7 rpm

on two levels (for boxes)



TECHNICAL SPECIFICATIONS

- Application to optimize the number of filled containers and increase the IMM autonomy
- Turntable for filling containers placed on two levels
- Filling logic: with IMM cycles count or with setting of filling time
- Diameter Ø 1450 mm
- Optional: polycarbonate O-ROUND protection

SPECIAL DOUBLE O-ROUND FOR 4+4 CONTAINERS

MODEL	D (mm)
DOUBLE O-ROUND	1450

CHARACTERISTICS

- Dispenser to distribute the product coming from a conveyor into different containers
- Dispenser with 360° rotating chute: it could be positioned near the press at any point along the storage path (longitudinal, lateral and perpendicular)
- Functioning logic: using signal from the IMM or programming the filling time

TECHNICAL FEATURES

- Max capacity: 2 kg for a single product
- Motor power 0.06 kw
- Standard motor supply voltage 400V/50 Hz
- Weight 40 kg
- Material of chute: ABS
- Options: unloading chute made of INOX A304 or unloading chute made of INOX A304 with deviators

