



MUEHSAM



**AUTOMATIC BAG EMPTYING
MACHINES**

AUTOMATIC BAG EMPTYING MACHINES

MACHINES FOR EMPTYING PELLET BAGS

THE FULLY AUTOMATED
SYSTEM THAT WILL HELP
YOUR COMPANY ACHIEVE
THE FOLLOWING BENEFITS:

- | Increase production efficiency
- | Reduction of human labour
- | Process and work environment improvement
- | Automation of the production process
- | Reduction of the production costs

MUEHSAM DP15T AUTOMATIC BAG EMPTYING MACHINE



MUEHSAM LITE AUTOMATIC BAG EMPTYING MACHINE



MUEHSAM DP15T AUTOMATIC BAG EMPTYING MACHINE

TECHNICAL SPECIFICATION

Output	adjustable up to 15 t/h
Accuracy of bag emptying	99,98%
Machine dimensions	2800 mm x 6000 mm x 3600 mm (W x L x H)
Pallet dimensions	1300 mm x 1100 mm
Pallet weight	max. 1600 kg
Pallet height	max. 2200 mm
Power supply	3x 400 V, 50 Hz
Consumption of compressed air	10L/cycle, 6 bar
Installed power	up to 10 kW
Intermediate hopper for pellets made of stainless steel	
Intermediate empty bag container made of stainless steel	





BASIC OPERATING PRINCIPLES

After being loaded by the forklift operator, the pallet with plastic pellets is lifted up towards the machine head by means of a chain drive. The hooks, integrated in the head, dig into the bags, transferring the entire layer from the pallet to the cutting section, where the bags are cut by rotating knives and the plastic pellet falls into an intermediate hopper. In order to minimise pellet loss, the bags are additionally hit with stainless steel rods controlled by an eccentric system. When the pallet is empty, the operator is alerted with a light and sound signal to replace an empty pallet with a full one.

MACHINE STRUCTURE

- Carbon steel frame
- Machine head consisting of 11 grippers. Each gripper contains 4 pairs of the hooks to transport the bags
- Pallet lifting with encoder-positioned electric motor for increased component life and 4 chain drivers
- Head drive - electric drive, with encoder position control
- 3 independent eccentric sets of hitting rods driven driven by electric motors
- 14 rotating knives made of hardened chrome steel for cutting through bags
- A special net placed in the container prevents pieces of bags from entering the silo
- Simens Simatic PLC or OMRON proceses control
- High resolution 9" colour touch panel for control and management of machine parameters
- Safety switch on the control cabinet
- Guards to restrict the area with moving pallet lift and machine head

MACHINE CONTROL SYSTEM

Manufactured entirely by Muehsam Rozwiązania Dla Przemysłu to the highest standards

9" touch screen for system control

Siemens and Omron components used to build the control cabinet to ensure reliability in every respect

SEW or NORD motors and reduction gears

FESTO/PREMA pneumatic system



EXAMPLES OF TWO WAYS TO CONFIGURE THE MACHINE



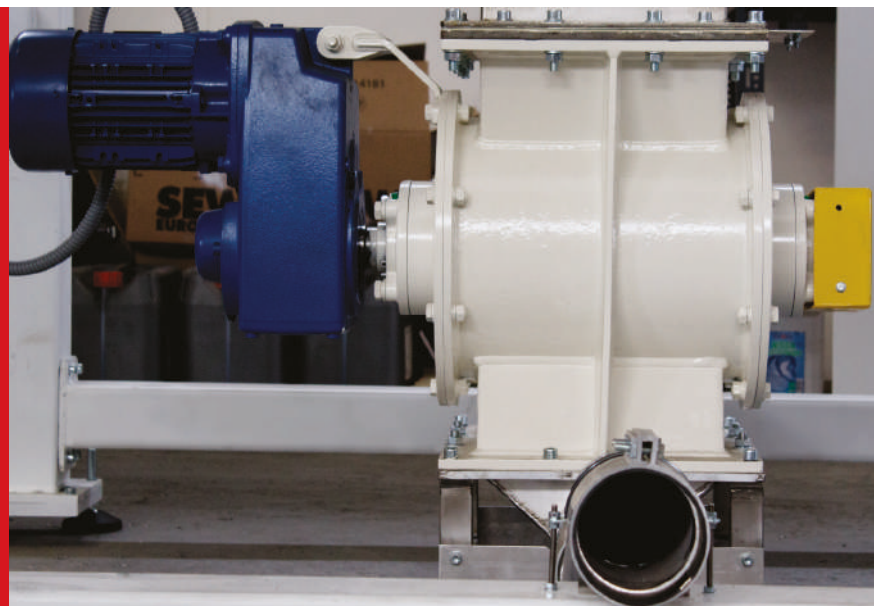
- The pallet is loaded from the front of the machine

- The pallet is loaded from the side of the machine



ROTARY VALVE

The price includes the rotary valve necessary for silos loading. The valve capacity is designed for the automatic bag emptying machine output.









MUEHSAM





MUEHSAM LITE AUTOMATIC BAG EMPTYING MACHINE

TECHNICAL SPECIFICATION

Output	adjustable up to 1,5 t/h
Accuracy of bag emptying	99,98%
Machine dimensions	3600 x 2400 x 3300 mm (W x L x H)
Pallet dimensions	1300 mm x 1100 mm
Pallet weight	max. 1600 kg
Pallet height	max. 2200 mm
Power supply	3x 400 V, 50 Hz
Consumption of compressed air	15L/cycle 8 bar
Installed power	up to 6 kW
IP55 protection	



MACHINE VIEW



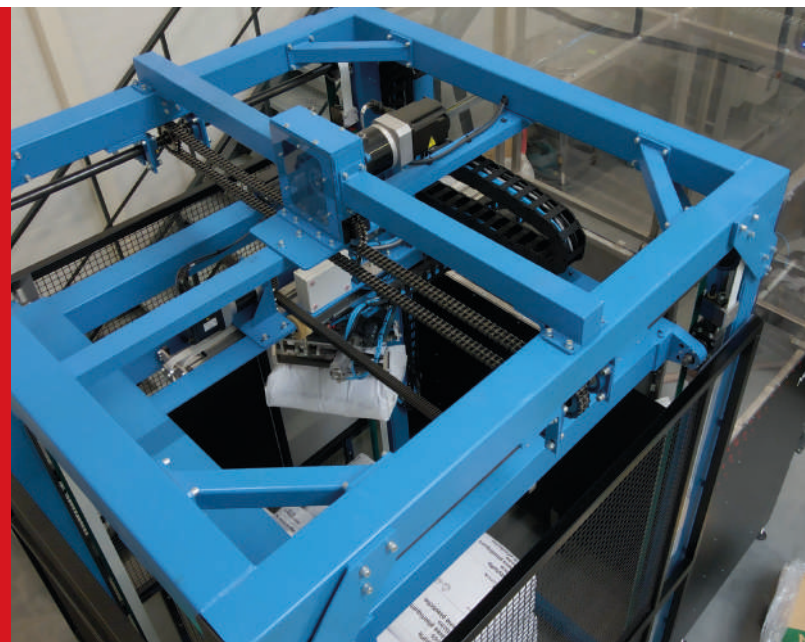
- Compact size machine

- The pallet is loaded from the side of the machine



BASIC OPERATING PRINCIPLES

After the forklift operator loads the pallet with plastic and selects the identification of the bag position, the sensor locates the bag's location on the pallet. The position of the bag is determined by sensors and the bag is loaded on hooks. The gripper transports the bag to the cutting section, where the bags are cut by the rotating knives and the material falls into intermediate tank. The empty bags are discharged into the emptied bags collection section.



MACHINE STRUCTURE

- Carbon steel frame
- Machine head consisting of 8 hooks
- The drive of the installation is a servo drive
- 10 rotary knives made of hardened chrome steel
- A special net placed in the container prevents pieces of bags from entering into the system
- OMRON process control
- High resolution 9" color touch panel for control and management of the machine parameters
- Safety switch on the control cabinet
- Guards to restrict the moving parts

MACHINE CONTROL SYSTEM

Manufactured entirely by Muehsam Rozwiązania Dla Przemysłu to the highest standards

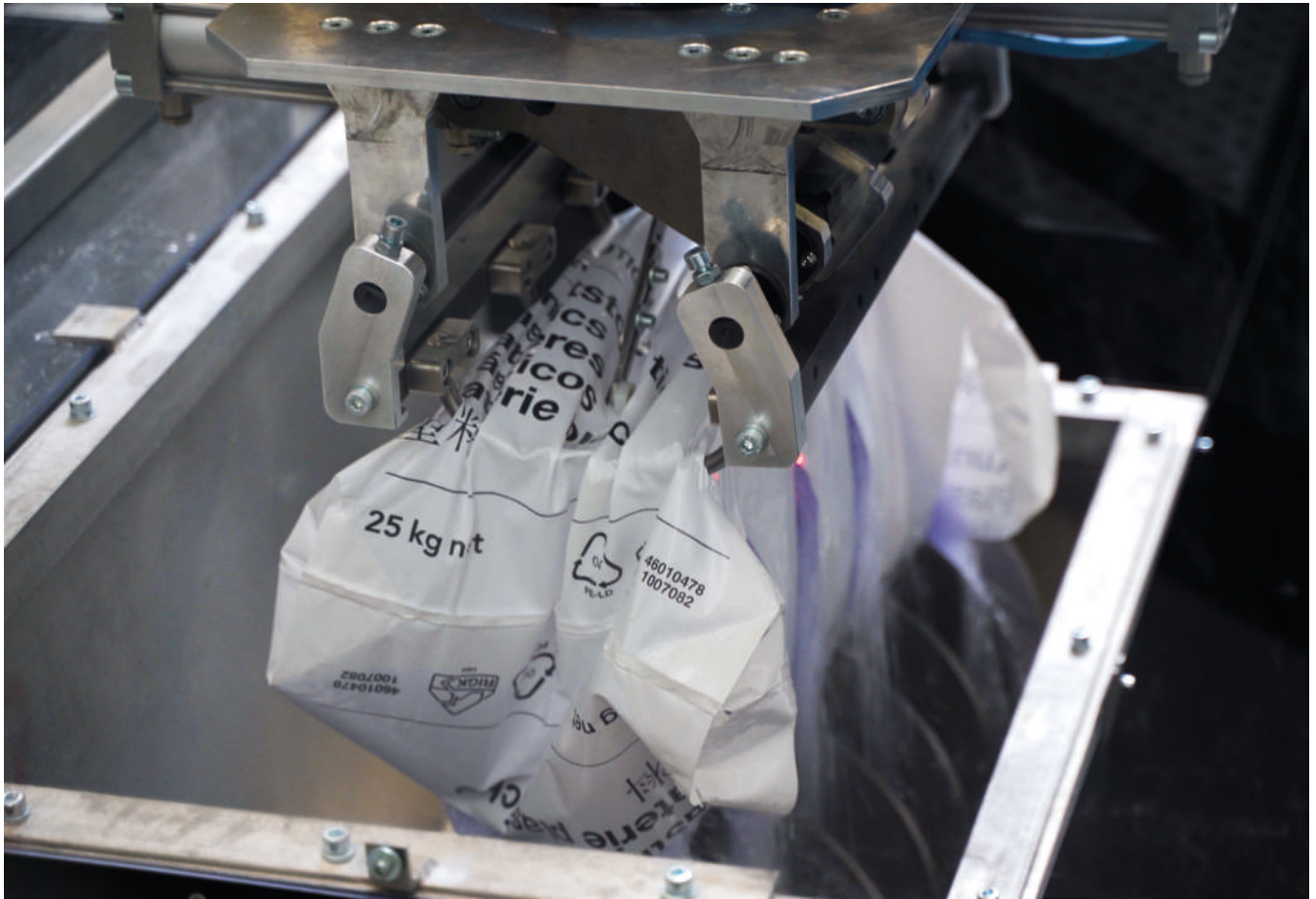
9" touch screen for system control

Control cabinet made of Omron components to ensure reliability in every aspect

SEW or Omron motors and reduction gears

PREMA pneumatic system







**FROM RAW MATERIAL TO
FINISHED PRODUCT - HIGH
QUALITY THANKS TO
IN-HOUSE PRODUCTION**



MUEHSAM

MUEHSAM Rozwiązania Dla Przemysłu Sp.j.

ul. Zagnańska 149C
25-563 Kielce
Poland

tel: +48 41 34 35 132
info@muehsam.pl

SALES AND TECHNICAL SUPPORT:

tel: +48 509 140 636
e-mail: piotr@muehsam.pl

 [linkedin.com/company/muehsam-rozwi%C4%99zania-dla-przemys%C5%82u](https://www.linkedin.com/company/muehsam-rozwi%C4%99zania-dla-przemys%C5%82u)

WWW.MUEHSAM.PL