

The size reduction of 6 meter full length window profiles can be processed with the **NEUE HERBOLD** profile granulator type **LP** without pre-cutting.

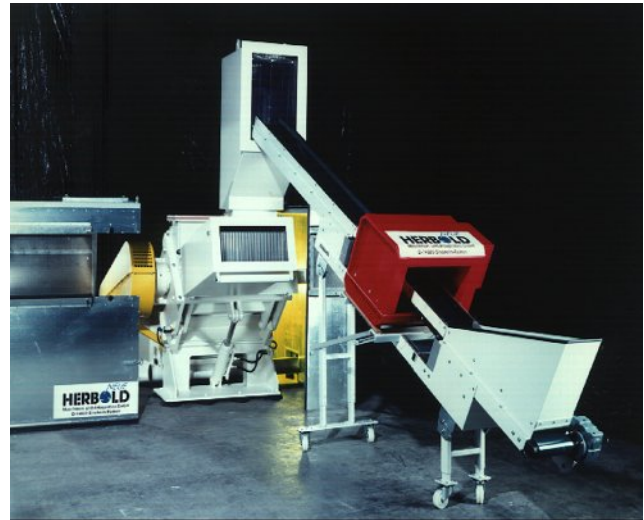
The profile granulators in the **LP** series are especially designed for the horizontal feeding of profiles with a maximum length of 6000 mm. The features and advantages of this series is the results in easy machine placement to include situation next to the extrusion line.



The profiles are feed into the horizontal chute, immediately grasp by the rotor and automatically pulled-in. The safe material pull-in characteristics is achieved through a special multi-blade rotor configuration in conjunction with the feeding geometry of the material inlet chute.

- **Advantage**

Since the profiles are automatically pulled-into the granulator, this eliminates the necessity for the operator to push the profiles into the machine.



**Technical data:**

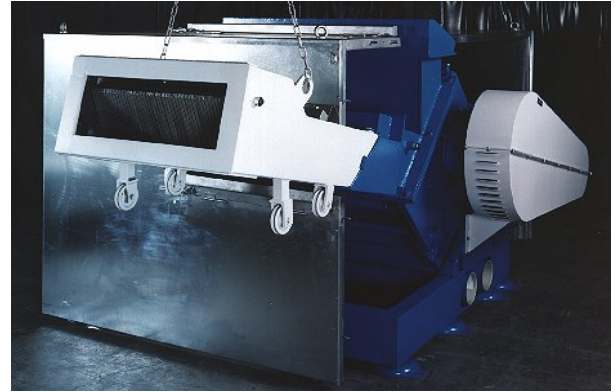
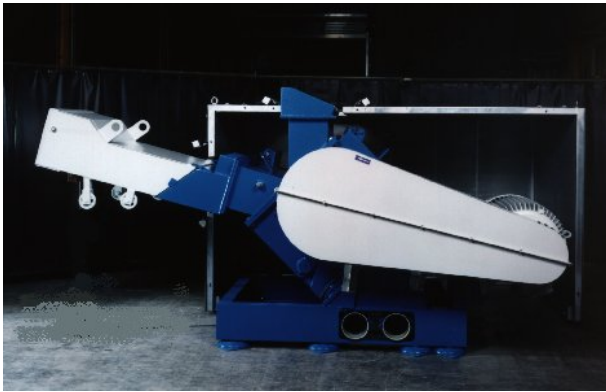
**Infeed cross section approx. 600 x 790 mm  
( 23.6 x 31.1 in. )  
Rotor diameter 450 mm ( 17.7 in. )  
Rotor length approx. 790 mm ( 31.1 in. )**

- **Complete steel welded construction**

**NEUE HERBOLD** in the **LP** series are extremely durable and heavy duty. This pertains not only to the housing but also the rotor bearings, knife supports, rotor shaft and knife mounts. The completely welded housing is manufactured from special strength steel to guard against housing fracture and extraordinary stress.

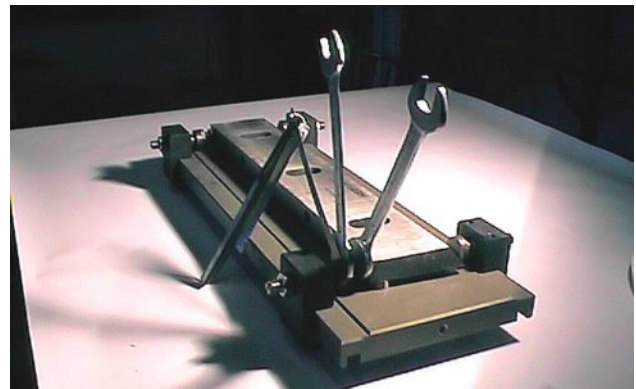


## SAFE AND EFFICIENT METHOD FOR PROCESSING 6 METER PROFILES AND THIN WALLED PIPES



### ● **Outboard mounted rotor bearings**

The rotor bearings are mounted completely outboard and separate from the granulator housing. The concept prevents any dust or material from entering the bearings which could lead to premature bearing failure. Furthermore this eliminates any temperature buildup in the bearings due to the chamber operating temperature.



### ● **Knife adjustment procedure**

The adjustment of the rotor and stator knives is performed completely outside the granulator utilising an adjustment fixture.

Adjustment bolts located on the rotor and in the housing are preset at the factory. Rotor and bed knives are adjusted utilising the bolts provided on each knife and readjusted after the knives have been resharpened. The knife adjustment procedure is totally independent from the granulator operation.

### ● **Advantages:**

The granulator "down time" is considerably reduced due to the fact that the knives have been previously adjusted. Therefore it is only necessary to remove the old knives and install the new preadjusted knives. Upon request the granulator can be equipped with a sound proof enclosure.